



THE SCARY TRUTH ABOUT TRASH

People make a lot of trash. Unfortunately, too many people carelessly throw it away instead of recycling as much as possible.

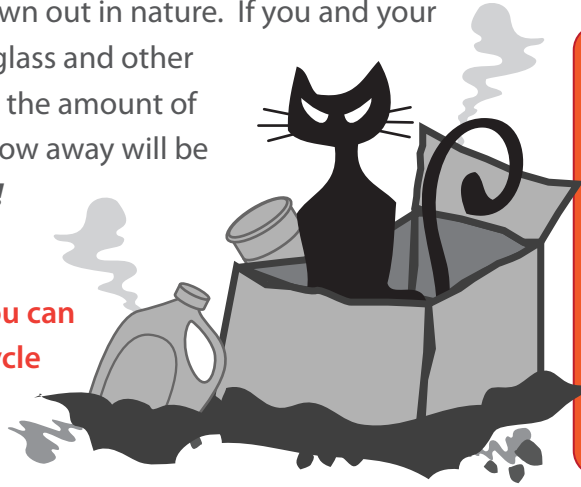
When unwanted paper, plastic, metal or glass aren't recycled or reused, they end up in a landfill or worse – on the ground or in lakes. **YIKES!**

That's not good for our environment because trash can pollute the soil where our plants and animals live. It can even make the water dirty enough to become unsafe to drink.

It's easy to think just one little piece of trash won't hurt anything, but what if thousands of people thought the same thing? That would add up to a LOT of yucky trash being thrown away. *So, when we recycle, we're doing our part in keeping the world cleaner and safer.*

A huge amount of trash is packaging materials. This means food containers and torn up packages like cans, boxes, plastic bottles, and more. A lot of trash can be recycled, so before you throw it in the waste basket, see if it can be put into a recycling bin. Captain Cullet likes to tell people about how glass is 100% recyclable. That means every little bit of a glass jar or bottle can be made into a new one. If you think about it, glass should never end up in a trash can or thrown out in nature. If you and your friends help recycle glass and other packaging materials, the amount of trash that people throw away will be a little less *ssssscary!*

Do you recycle?
Ask an adult how you can create a plan to recycle at home or school.



D	S	Q	L	U	V	T	S	H	S	S
L	I	T	T	L	E	G	O	B	N	J
C	W	Z	C	I	B	W	R	S	J	T
V	Y	D	E	A	I	U	N	M	Q	E
M	R	E	C	Y	C	L	E	L	C	L
D	U	S	E	N	Y	P	R	Z	E	L
N	O	L	P	G	T	J	M	A	D	U
A	P	A	N	T	R	R	J	I	U	C
L	T	N	Q	X	A	O	A	Z	B	N
B	J	D	E	C	S	Z	V	B	C	I
O	H	F	T	E	H	Y	R	Q	Y	A
T	W	I	K	W	E	S	G	V	I	T
T	G	L	T	X	G	L	A	S	S	P
L	I	L	R	F	Y	G	M	R	H	A
E	D	G	C	M	L	K	X	P	E	C
E	N	V	I	R	O	N	M	E	N	T
L	K	Q	N	K	Q	S	T	L	M	C

Can you find these words in the letters above?

- RECYCLE
- TRASH
- GLASS
- BOTTLE
- CAPTAIN CULLET
- LITTLE GOB
- LANDFILL
- ENVIRONMENT

Unscramble the orange letters found above:

Answer at bottom of page.

Learn more and have fun at:
www.captaincullet.com

Enjoy our animated adventures, online games and other fun stuff. You'll learn about why recycling glass containers is very important. Ask an adult if it's okay first!



Craft Time with the Little Gob o' Glass!

After you recycle glass containers, they are crushed into cullet and melted to make new glass bottles and jars. What's cool about that? The containers don't end up in landfills! Finding ways to reuse your glass bottles and jars is also a good idea, as long as they don't end up in the trash. Here's a fun thing to do with used jars:

MAKE A MUMMY JAR

What you'll need:

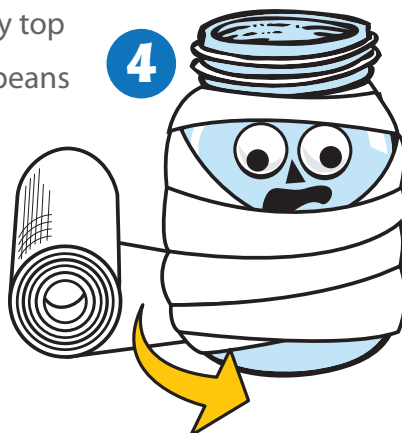
- 🍊 A small to mid-sized empty jar. A baby food jar or jelly jar would work well. *You'll need the lid, too!*
- 🍊 Googly eyes with sticky backs.
- 🍊 Black construction paper, scissors and glue.
- 🍊 Gauze for the mummy wrap.
- 🍊 Green jelly beans or small green candies.



How to make the Mummy Jar:

- 🍊 1. Peel off the jar labels. Wash and dry the jars.
- 🍊 2. Place the two googly eyes on the jar.
- 🍊 3. Using the black paper, cut out a nose and mouth and glue them in place close to the eyes.
- 🍊 4. Wrap the gauze around the jar keeping an open area around the face.
- 🍊 5. Tie a knot or tuck in the gauze on the back side of the face to secure it to the jar.
- 🍊 6. Fill the jar to the very top with the green jelly beans or candies and put the lid on...

Now you have a spooky jar of treats to share with your family and friends!



1



2



3



4

5

6